



## TROVIS-VIEW accessories

### Quick guide for driver installation of isolated USB interface adapter

TV-SK 6389-2 EN

#### Application

The isolated USB interface adapter (item number 1400-9740, labeled 1170-3143) allows SAMSON Series 373x-x Positioners to be connected over their serial interface to the USB port of a computer.

#### Scope of delivery

- Isolated USB interface adapter
- Cable (USB-A and USB-Mini-B)
- Driver installation CD-ROM or TROVIS-VIEW CD-ROM containing the driver



#### Technical data

- Compatibility: USB 1.1 and 2.0
- Operating systems: Windows® 2000/XP/Vista/7
- Connections: 1 USB Type A connector and 5-pole connector to the serial interface of the positioner

#### Installing the driver

Administrative rights are required to install the driver.

If the isolated USB interface adapter is connected to the USB port of the computer (the positioner does not need to be connected), it is automatically detected as a USB device. Continue as described below depending on the operating system used:

##### Windows® XP

The Wizard starts automatically.

- Select *No, not this time* (no link to Windows Update).
- Select *Install from a list or specific location*.
- Specify the driver location such as D:\USB driver in *Include this location in the search*.
- The driver software is installed - SAMSON USB Converter.
- After completion, the Wizard starts again automatically. Repeat the previously made settings.
- The second driver is then installed - SAMSON USB Serial Port.

##### Windows® 7

The popup window 'Device driver software was not installed' - SAMSON USB Device appears.

- Open the Device Manager.
- A yellow exclamation mark appears next to 'SAMSON USB Device' in 'Other devices'.
- Right-click 'SAMSON USB Device' to open a menu. Select *Update Driver Software*.
- Click *Browse my computer for driver software (Locate and install driver software manually)*.
- Select directory where the driver is located, e.g. D:\USB-Driver\.
- A Windows Security message appears indicating 'Windows can't verify the publisher of this driver software'.
- Select *Install this driver software anyway*.
- After the driver is installed, the window *Windows has successfully updated your driver software* (SAMSON USB Converter) appears. The SAMSON USB Converter can be found in the Device Manager under 'Universal Serial Bus controllers'.



## TROVIS-VIEW accessories

### Quick guide for driver installation of isolated USB interface adapter

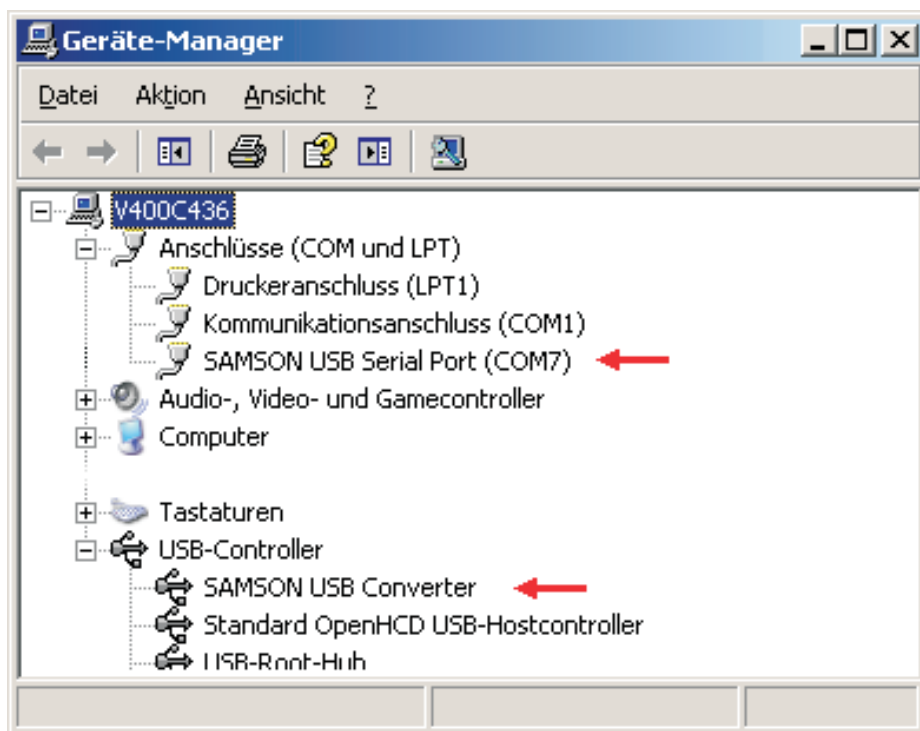
TV-SK 6389-2 EN

- The popup window 'Device driver software was not installed' - USB Serial Port appears. Repeat aforementioned steps. This installs the second driver. After the driver is installed, the window *Windows has successfully updated your driver software* - SAMSON USB Serial Port appears.  
SAMSON USB Serial Port (COMx) can be found in the Device Manager under 'Ports (COM & LPT)'. 'Other devices' is no longer visible.

The isolated USB interface adapter is now ready for use.

#### Verifying the installation

SAMSON USB Converter is listed in the Device Manager under 'Universal Serial Bus controllers' and SAMSON USB Serial Port (COMx) is listed under 'Ports (COM & LPT)'. In the Device Manager, you can read the COM port allocated to the USB port or change the COM port assignment by selecting *Port Settings* -> *Advanced*.



Windows® XP, Device Manager  
with SAMSON USB Converter and SAMSON USB Serial Port (COM7)

#### Note:

The latest driver software can be downloaded from the Internet (<http://www.samson.en>) under Products > Support & Downloads.

The driver for the isolated USB interface adapter can also be used for the USB/RS-232 converter (item no. 8812-2001) and SAMSON equipment with a USB port, e.g. the TROVIS 6495-2 Industrial Controller.

Specifications subject to change without notice!